



# SCREEN PRINTING INKS



# CONTENT

<b>4</b>	Our Products and Services
<b>6</b>	Glass
<b>8</b>	Container
<b>10</b>	Labels
<b>12</b>	Membrane Switches
<b>13</b>	Touch User Interfaces and Input Systems
<b>14</b>	Automotive
<b>16</b>	In-Mold-Decoration (IMD)
<b>17</b>	Electrical Devices and Household Appliances
<b>18</b>	Signs
<b>19</b>	Functional Inks
<b>20</b>	Identity Cards
<b>21</b>	Special Purpose Inks
<b>22</b>	Special Effect Inks
<b>24</b>	Colour Management
<b>25</b>	Research and Development
<b>26</b>	Services

BRINGING  
COLOUR TO LIFE

## Marabu Printing Inks – Expertise, Quality and Productivity

**At Marabu, we have been brightening the world around us for years. Since our foundation in 1859, we have been creating innovative inks for a wide range of applications.**

Marabu is a leading global manufacturer of screen, digital, and pad printing inks, and as well as of liquid coatings. Our experience of developing outstanding screen printing inks for industrial and graphic applications lasts for over 65 years. We work day in, day out to make sure our name and brand are synonymous with quality.

The company is headquartered near Stuttgart, Southern Germany – a region renowned for its pioneering technology and engineering prowess. With its 14 subsidiaries and exclusive distribution partners, Marabu offers high-quality products and customer-specific services in more than 80 countries. We work hand-in-hand with our customers to identify opportunities and to create tailor-made solutions. The main focus is always on raising productivity, lowering costs, and improving process efficiency. To achieve these goals, Marabu offers expert advice and assistance – including on-site service and support, and hands-on training.

Marabu is always on the pulse of time and has fully embraced the digital age. As a modern ink-manufacturer, the company is still continuing to blaze new trails with ambitious projects and cutting-edge technologies, and in this new era, screen printing is more important than ever. It is highly versatile, with both decorative and functional strengths. Screen printing offers high resistance, opacity, and crisp, precise edges. As a result, this technology is irreplaceable. Moreover, it is increasingly being used in tandem with other printing technologies.

Read on to discover more about our comprehensive portfolio of products for screen printing.

Marabu, the expert for



Screen



Digital



Pad



Liquid Coatings

[www.marabu.com](http://www.marabu.com)  
[www.marabu-inks.com](http://www.marabu-inks.com)

## OUR PRODUCTS AND SERVICES



## What Makes Marabu a Trusted Partner?

At Marabu, we understand that it is not enough just to offer outstanding products – our customers can expect much more than that. They can expect a genuine partner: someone who is ready to listen, who has the right skills, and the right attitude. We pull out all the stops to find the best solution available for each and every challenge.

We work closely with our customers to develop tailor-made inks for their applications and we have always defined quality in terms of customer benefit. As the technology leader in screen printing inks, our experience guarantees exceptionally reliable results every time.

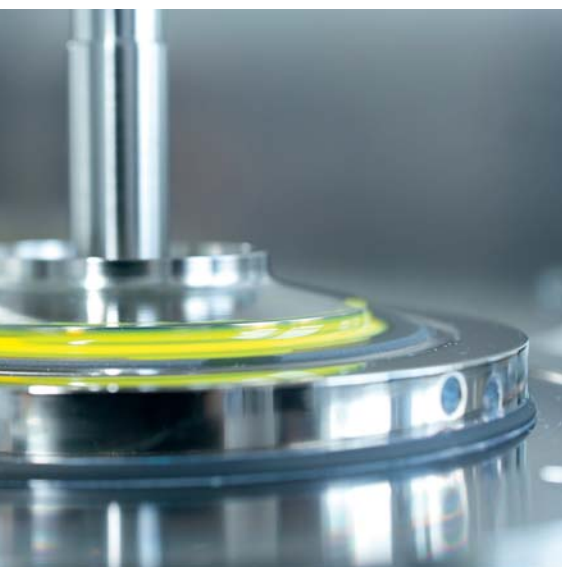


## Application and Development Skills

We are on a constant quest to develop new, pioneering products. Our continuous research and development efforts have led to pioneering UV-curable inks for glass, low-migration inks for packaging, and UV LED-curables for diverse substrates. And those are just a few examples. As a result, we have a wide portfolio of products for our customers' many and varied needs.

## Environmental Protection and Product Safety

Marabu has always invested in the future of people and our planet. We have underlined this commitment by creating a dedicated department for product and environmental safety. This team has, for instance, led our shift from disposing of waste to recycling it. Furthermore we have continuously lowered our use of hazardous substances. Overall, our environmental standards are amongst the highest in the industry.



## Productivity and Efficiency

At Marabu, we know that machine downtime means lost productivity and lost profits. Our printing inks and experimental support staff help customers avoid disruptions to their processes. Benefits include highly reproducible results and more energy-efficient drying.

## Quality and Testing

We understand that rigorous quality control is essential to providing consistently reliable products and services. It is a key element of our core business. We carry it through from start to finish: from vetting our raw materials and suppliers to running durability tests, to seeking certification through external organisations. Marabu is certified to DIN EN ISO 9001 and DIN EN 14001.



## Combining Ink and Glass to Create an Exquisite Design

When it comes to glass – whether for bottles, containers, panes, furniture, or communication devices – manufacturers need to make their products stand out. Marabu is the leading specialist for organic inks for glass, offering a broad range of brilliant shades.

A variety of design possibilities, lower costs, and eco-friendliness: few materials offer the unique qualities and exceptional versatility of glass. But printing on this challenging substrate requires the right expertise. Marabu's line of inks for glass has the perfect solution – whatever your industry and whatever the application.



### Mara® Glass MGHT

- Outstanding temperature resistance (for e.g. laboratory glass, light bulbs and touch panels)
- High electrical resistance values of the ink film
- Smooth, homogeneous surface with high edge definition

### Mara® Glass MGL

- Solvent-based ink that is highly resistant to chemicals and container contents and is dish washer safe
- Vivid and versatile colour palette: Brilliant shades with a high-gloss finish
- Can be laminated using all popular films

### Ultra Glass UVGL

- UV-curable two-component ink that is very durable, even without oven drying
- Saves energy, time and space
- Perfect for glass packaging and for large panels of flat glass for indoor use

### Container Glass

Where strength meets aesthetic appeal

Glass is a strong, attractive material that offers a host of exciting and innovative design possibilities.

### Flat Glass

Bring your ideas to life

Organic inks allow you to create the full range of colours and effects.

### Gold and Silver Effects

Hot stamping in combination with UV-curable inks

Results in high gloss metallic effects which are absolutely comparable to precious metals, at a much lower price.



### Ultra Glass UVGO

- UV-curable, high-gloss two-component ink
- Dishwasher-safe, very high resistance to alkaline substances and chemicals
- Broad selection of brilliant and highly transparent inks

### Ultra Glass UVGL Primer

- Any favoured design can be printed on glass surfaces
- The printed image is serving as a type of cliché for the hot foil
- The foil only adheres to the areas that were primed with UVGL





## Branding Made Beautiful

Printing directly on bottles made from PE, PP, PET and other plastics presents a wealth of possibilities – and challenges. Customised designs make a unique, distinctive statement, and enable products to stand out. Screen printing is the ideal method.

Plastic packaging, such as bottles and tubes, comes in a broad variety of shapes and sizes. Moreover, the substrate itself, its colour, and the required degree of flexibility can also vary considerably.

Inks must meet increasing expectations in terms of attributes and appearance – and growing interest in low-migration products. These are formulated to minimise the transfer of their ingredients to packaged items, safeguarding the health of the user.

Marabu's UV-curable inks are always a safe bet: we select our materials with the utmost care, and ensure they fulfil stringent purity criteria.

### Make a statement

Print directly onto containers using screen printing technology: for great coverage, durable results and a unique appearance.

#### Ultra Pack UVPHR

- UV-curable high-gloss ink with outstanding adhesion to PET substrates
- Very high reactivity, suited for high-speed cartridge printing machines
- Very good mechanical, chemical, and fill good resistance

#### Ultra Pack LEDC

- LED-curable – suitable for container printing and flatbed label application
- Very durable thanks to high resistances
- Silicone free Opaque White 171

#### Ultra Pack UVC

- UV-curable, high-gloss ink for printing directly onto containers
- Suitable for use on a wide variety of substrates
- Very resistant to water, steam and packaging contents





### Ultra Pack UVK+

- UV-curable, high-gloss ink for pre-treated polyethylene and polypropylene
- Dries very quickly, maximum possible opacity
- Very good resistance to water and steam for one-component applications, e.g. on cartridges

### Ultra Pack UVCP

- For the decoration of cosmetic packaging such as shampoo bottles, cream tubes, etc.
- Special selection and purity criteria of the raw materials
- For utmost process safety
- Ingredients fulfil purity criteria which are based on the requirements of food packaging





## Create a stand-out brand image

Today, many products have a unique printed label. These range from the transparent no-label look to prominent labels for luxury items. Particularly for premium products, emotive, durable and attractive designs play a vital role – and these are best achieved through screen printing.

The screen printing method provides excellent opacity (important for dark substrates), a choice of high-gloss or matt finishes (for attractive results), and exceptional resistance to packaging contents and to mechanical strain – all great reasons to opt for this technology. Marabu screen printing inks dry exceptionally fast. Moreover, compatibility with other printing processes, such as flexography or offset printing, makes Marabu's UV ink systems the number one choice.

### Enhancing the safety of your products

Inks visible under UV light and braille coatings allow you to create effective safety labels.

#### Ultra RotaScreen UVRS

- UV-curable, high-gloss ink for rotary screen printing
- Ideal for overprinting with UV-letter-press and UV offset inks
- Very fast-drying for high printing speeds

#### Ultra RotaScreen UVSF

- UV-curable, high-gloss ink for rotary screen printing
- Silicon-free, for maximum adhesion of flexographic inks
- High resistance to chemicals and mechanical strain

#### Ultra Pack UVC

- UV-curable, high-gloss ink for flat-bed label printing
- Suitable for an extremely wide range of substrates
- Very good resistance to packaging contents, water and steam



### Eye-catching special effects

Screen printing is particularly effective for creating special effects such as fluorescent or metallic finishes, mother-of-pearl or textured effects.

### Ultra Star-M UVSM

- Deep-matt opaque black with a velvety yet scratch-resistant surface
- Provides excellent receptivity of metallic hot foil stamping and of thermal transfer foils
- Eye-catching contrast effects through selectively applied gloss overprints
- Suitable for flat-bed label printing



# MEMBRANE SWITCHES

## For a Memorable Message and a Great Level of Comfort and Safety

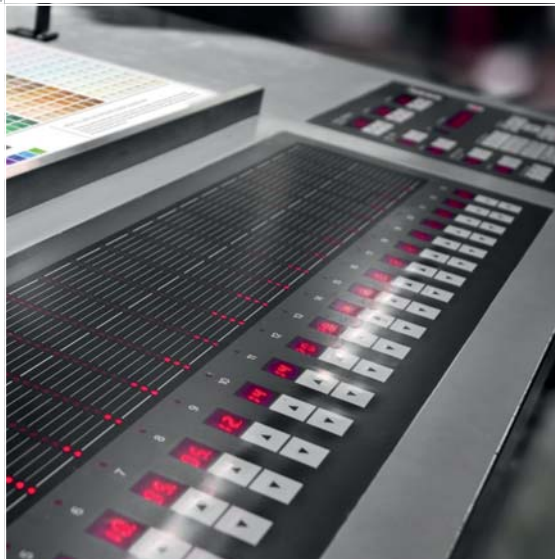
Electronic switches and controls must work reliably, be easy to use, and be insensitive to dirt or dampness. Marabu not only offers inks specially designed for membrane switches, we are one of the few specialists to deliver end-to-end expertise – covering inks, adhesives, membranes, films, and production processes.

When manufacturing membrane switches, inks, films, and adhesives must work in harmony to prevent adverse reactions. With our extensive experience as an ink supplier and our comprehensive know-how when it comes to materials and processes, we are at the forefront of innovative developments such as UV-curable ink systems.



### State-of-the-art

Membrane switches must work reliably – placing high demands on screen printing systems. Marabu screen printing inks are compatible with all widely used films, making them suitable for any application.



### Screen Meets Digital

Marabu's innovative solution for printing input systems unites the strengths of screen and digital printing. It means the best of both worlds. It streamlines and simplifies production, opens up opportunities for customisation, and enhances cost-efficiency – without compromising on quality or other desirable properties.

#### Mara® Switch MSW

- Solvent-based, satin-gloss ink
- Very easy to work with and does not clog the mesh screen
- Highly flexible ink film for finishing processes such as die-cutting or embossing



#### Ultra Switch UVSW

- UV ink with exceptional elasticity
- Very good adhesion to the substrates and between the individual ink layers
- Compatible with MSW

#### Mara® Star SR

- Solvent-based, high gloss ink
- High opacity
- Very fast drying
- Resistance to outdoor use and chemical resistance, for example to petrol

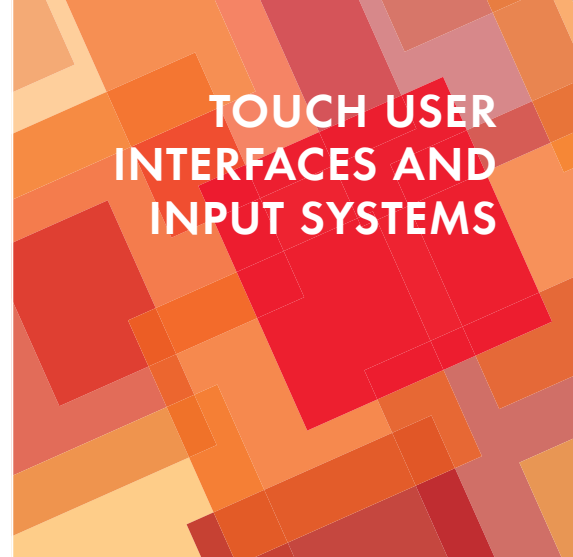
## Adding a Special Touch – for Industrial Printing of Quality Input Systems

Touch user interfaces come in many guises, including panels, screens and membrane switches. The popularity of these technologies in smartphones and interactive netbooks is also inspiring their use in other devices and industries. In many products, membrane switches are increasingly being replaced by touch panels. The combination of sleek, cutting-edge glass and electronic functionality, plus highly durable and dirt-repellent surfaces, makes them highly attractive – for example, for medical and building technology, and in the food and pharmaceutical industries.

The fast-growing 3C (computing, communication and consumer electronics) market places exacting demands on materials – especially on inks. Against this background, Marabu has developed special, highly opaque inks for 3C applications such as smartphones and tablets.

### Applications:

- All-in-one computers
- Navigation devices
- Automated systems (e.g. ticketing systems) and information terminals
- Computer screens
- Digital cameras/camcorders
- Smartphones
- Game consoles
- Tablets, netbooks, ultrabooks
- White goods/glass panels for electrical/household appliances



### Marabu® Glass MGL

- Solvent-based ink that is highly resistant to chemicals and container contents and is dishwasher safe
- Brilliant shades with a high-gloss finish
- Can be laminated using all popular films

### Ultra Glass UVGL/UVGO

- UV-curable two-component ink that is very durable, even without oven drying
- Saves energy, time and space
- Perfect for glass packaging and for large panels of flat glass for indoor use
- UVGO with oven drying

### Marabu® Glass MG3C

- Designed for second-surface printing onto common 3C glass substrates
- Outstanding optical density
- High electrical resistance values of the ink film
- Silicone-free: Perfect adjustment for multi-layered ink structures





## Visual Appeal

**When buying a car, consumers are very critical – particularly when it comes to appearances. Screen printing, with its colour brilliance and versatility, plays a key role in the automotive industry.**

Screen printing is ideal for printing details, for example on dashboard components such as speedometers, switches, and other controls. The challenge lies in ensuring resistance to high temperatures, weather, wear, odours, abrasion and cleaning agents. In addition, key qualities include light fastness, perspiration fastness, excellent gloss and brilliance, chemical and mechanical resistance, and good adhesion, opacity, and flexibility.

A further, essential aspect is suitability for downstream production processes. Marabu ink systems deliver exceptional results wherever they are used – from functional coatings to colouration applications. They fulfil a wide array of today's automotive screen printing demands for first-class appearance and quality, and diverse customisation options.

### Libra *Matt* LIM

- Matt solvent-based ink
- High opacity and outstanding printability
- Excellent performance in climatic chamber tests
- We recommend Maraswitch MSV for 3D applications

### Mara® *Cure* HY

- Flexible, abrasion and chemical resistant dual-cure screen print varnish
- Protective coatings or eye-catching effects
- High flexibility of the varnish guarantees best mouldability
- Economical, efficient alternative to film coating



### Mara® Switch MSW

- Solvent-based, satin-gloss ink
- Very easy to work with and does not clog the mesh screen
- Highly flexible ink film for finishing processes such as die-cutting or embossing

### Ultra Plus UVP

- Highly cross-linked UV-curing screen printing ink
- Very good adhesion on different plastics
- High chemical and mechanical resistance



# IN-MOLD- DECORATION (IMD)

## Great look – perfect function: IMD

Coloured injection-moulded components with scratch- and abrasion-proof printed designs have become part of our everyday life. Injection moulding – the preferred method for precisely shaped parts – is the perfect solution for creating these visuals. However, this sophisticated technology calls for an exceptional ink: one that combines maximum elasticity with high resistance to extreme temperatures.

The appeal of a moulded part lies not only in the properties of the substrate, but in its colouration. Consequently, Marabu offers a special, UV-curable line of inks in addition to its solvent-based systems. These have key, productivity-enhancing advantages. Specifically, downstream processes, such as moulding, punching and back injection moulding, can take place directly after printing and UV-curing. Furthermore, no additional tempering of the printed films is necessary.

### Best practice

In-mould decoration is perfect for printing dashboard components such as speedometers, switches and other controls.



### Ultra Mold UVPC

- UV curing eliminates tempering process
- High reactivity, quick production speeds
- Very flexible ink film, outstanding formability

### Mara® Cure HY

- High flexibility of the varnish guarantees best mouldability
- Flexible, abrasion and chemical resistant dual-cure screen print varnish
- Protective coatings or eye-catching effects

### Mara® Mold MPC

- Solvent-based, one- or two-component ink
- Excellent elasticity and resistance to temperature extremes
- Adheres exceptionally well to injection-moulded materials



# ELECTRICAL DEVICES AND HOUSEHOLD APPLIANCES

## Tough Enough for Everyday Rough and Tumble

The lettering and other markings required on audio equipment, electrical devices and household appliances, including white goods such as washing machines, dryers and microwaves, need to be tough – they are exposed to chemicals, heat and steam on a daily basis. Marabu screen inks guarantee exceptional resistance on a variety of surfaces. A choice of one- and two-component solvent-based inks and UV-curable ink systems are available, meeting diverse needs.

An important role is played by decorative prints on the second surface of front panels and panel inserts. These components are typically made of polycarbonate (PC) or acrylic (PMMA). However, glass, which is ideal for printing, is gaining in importance. Its surface is highly resistant to chemicals, stains and dirt. It is also increasingly used for input systems.



### Marabu® Glass MGL

- Solvent-based ink that is highly resistant to chemicals and container contents and is dishwasher safe
- Brilliant shades with a high-gloss finish
- Can be laminated using all popular films

### Ultra Glass UVGL/UVGO

- UV-curable two-component ink that is very durable, even without oven drying
- Saves energy, time and space
- Perfect for glass packaging and for large panels of flat glass for indoor use
- UVGO with oven drying

### Marabu® Switch MSW

- Solvent-based, satin-gloss ink
- Very easy to work with and does not clog the mesh screen
- Highly flexible ink film for finishing processes such as die-cutting or embossing





## Leading the way in performance and durability

Surfaces in outdoor environments must be extremely durable, light-fast and weather-proof. This applies to many items – such as road signs, infrastructure in public spaces, advertising boards, and exterior corporate design elements – in locations that vary from car dealerships to supermarkets. But in interiors as well, inks are called for that fulfil a number of requirements in terms of resistance and adhesion.

UV-resistant ink systems from Marabu can be employed in practically any scenario, and deliver consistently brilliant results – on wet-coated and powder-coated metals, on anodised aluminium, on high-performance films, on acryl glass and on a wide variety of plastics.

### Weather warning

Traffic signage and other outdoor signs and information systems must be able to withstand prolonged exposure to sun, wind, and rain. Marabu's UV-resistant ink systems ensure long-term brightness and readability.

#### Libra Speed LIS



- Solvent-based ink
- Very good UV-resistance and ability to withstand all weather conditions
- High flexibility makes it ideal for vacuum forming

#### Mara® Sign TS

- Ideal colour shade for film classes RA 1-3
- Excellent co-efficient of retro-reflection, in line with DIN 67520
- Impressive weather resistance

## Greater Customisation, Greater Safety

Functional inks support certain technologies, making them more efficient or even performing their own specific function. They can be applied to glass or plastic – and Marabu has addressed this growth market.

Functional inks are used for a host of applications – ranging from fluorine acid etch-resistant coatings for solar technology, to glow-in-the-dark inks with extra-long glow time, to primers for substrates with very poor surface properties.

We are the right partner for new applications. Contact us!

Functional inks are available not only for screen printing, but also for pad and digital printing.

They can be injected, sprayed, or applied using roller coating, for example.



### Glow-in-the-Dark:

Screen inks can be made to absorb UV radiation or light, and then emit it again once the light source has been removed. This effect creates high visibility in the dark, for example for emergency exit signs.

### Mara® Glow GW

- Solvent-based phosphorescent ink
- Three colour shades with diverse pigment types and glow times
- Protective coating is recommended for outdoor use



## IDENTITY CARDS



### Payment, access, time logging – all under control

Smart ID and credit cards are leading the way in the global electronic user-authentication market. And printing plays a key role, particularly in terms of overprintability and ensuring resistance to peeling – guaranteeing the integrity of laminated cards.

Marabu solutions for single- or double-layer identity cards really stand out from the crowd. Our inks can be laminated and are available in a wide range of metallic finishes and other special effects. What's more, they are highly flexible, and can be overprinted using offset techniques.



#### *Marabu® Flex FX*

- Solvent-based ink, ideal for lamination
- Highly flexible; suitable for embossing, die-cutting, and laser marking
- Specialty products and versatile colour mixing system



## Screen printing excels where other processes struggle

**Screen printing is exceptionally versatile. The key to great results is selecting inks that offer the right properties to meet your specific challenges: high opacity, exceptional durability, good adhesive properties, or maximum flexibility.**

### Graphic screen printing:

Businesses specialising in screen printing create a huge variety of final products. Working with diverse substrates demands the right combination of specialist knowledge, experience, flexibility, and innovation. Marabu delivers on all counts – and our remarkably broad selection of inks offers a solution for every application.

### Optical discs:

Optical discs are used to play films and music and to store digital files. Screen printing onto optical discs requires specialist expertise, and ink systems must be up to the task. The higher the quality of the printing ink, the more flexibility you have in terms of your production processes (i.e. speed, tilt, etc).

### The colourful world of advertising:

Marabu offers printing inks for paper and all types of plastic – for indoor and outdoor promotional displays, posters, large banners, advertising and other signage, stickers, promotional gifts, and more.

### Point-of-sale applications:

For graphic prints like promotional displays (POS/POP), signs, posters, stickers, etc. – for in- and outdoor use.

### Sports equipment:

There is a huge variety of sports equipment on the market, and every project presents its own challenge. Whether you are looking for inks with high resistance to chemicals and mechanical strain, a high-gloss finish and excellent opacity, or a broad colour palette with a host of special effects – we have the solution for you.

### Toys:

Marabu offers ink systems designed for the diverse substrates used by toy manufacturers. Our inks meet the industry's special requirements – they are free of heavy metals as required by DIN EN 71, and offer maximum resistance to chemicals and mechanical strain for a long product life. When fully dry and assuming good adhesion, the inks are resistant to sweat and saliva in line with DIN 53160.



# SPECIAL EFFECT INKS

## Applications:

- Metallic effects (bronze powders and pastes, high-gloss metallic pastes, press-ready metallics)
- Mirror inks
- Glitter effects
- Pearlescent effects
- Luminescent inks (glow-in-the-dark inks, fluorescent inks, UV-active inks)
- Thermochromatic effects
- Matt, structured and gloss effects (3D effects)
- Writeable inks
- Scent effects
- Braille

## Making the Right Impact

**Colours have a huge impact on our lives. Brilliant tones and specially printed surfaces can be a source of fascination. Visual and tactile effects create lasting memories and remarkable emotions. For this reason, special-effect inks are all-important, not least in advertising. Marabu offers products with matt, textured, braille, and gloss effects. They can be shiny, metallic, iridescent, glittery, or with a tangible raised surface – and much more besides.**

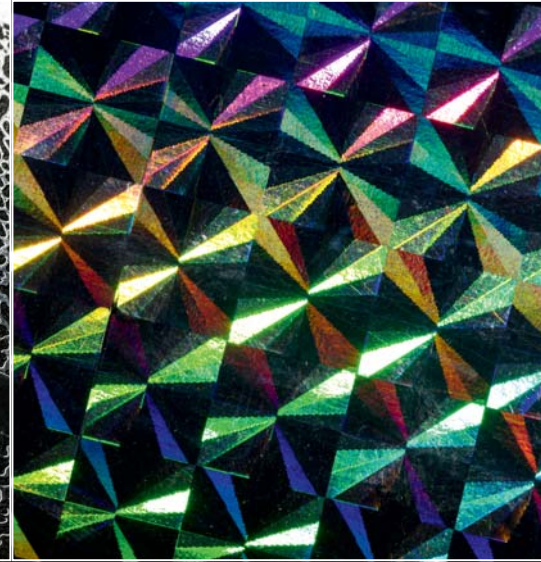
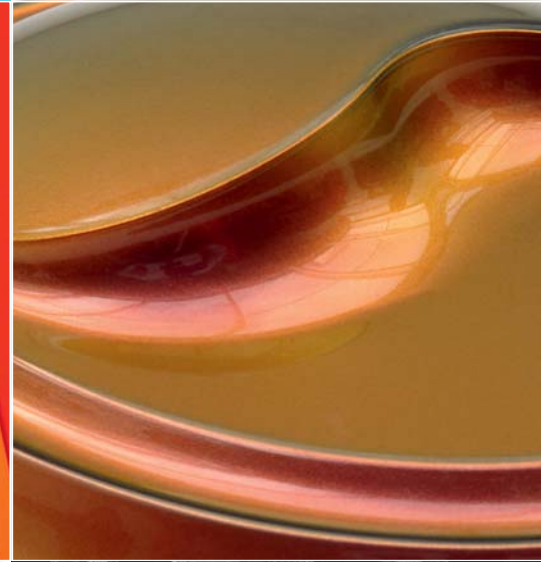
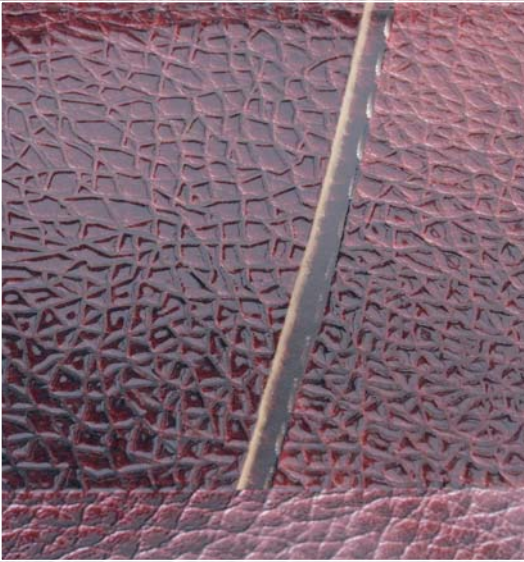
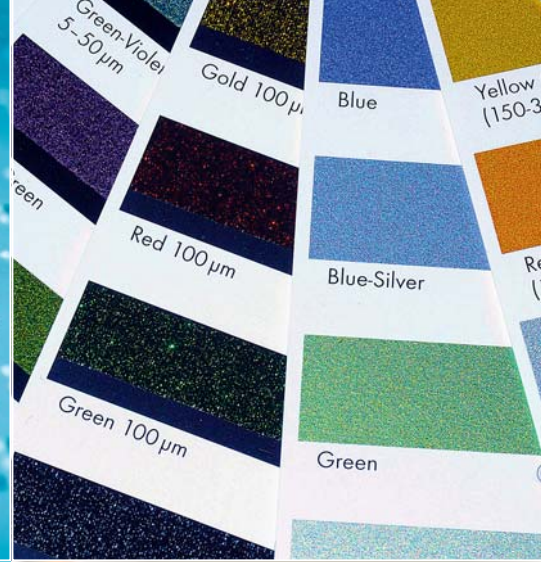
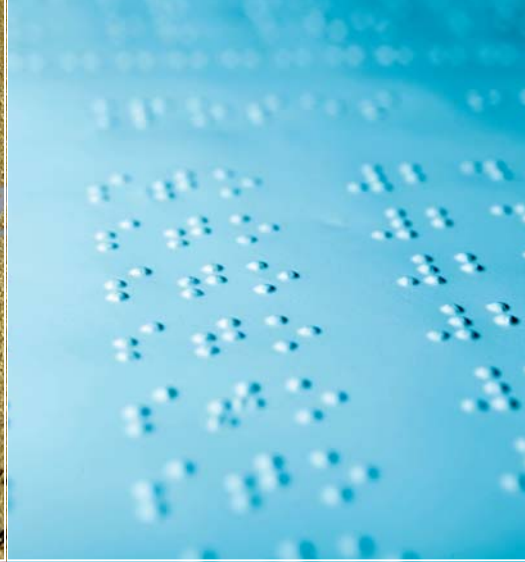
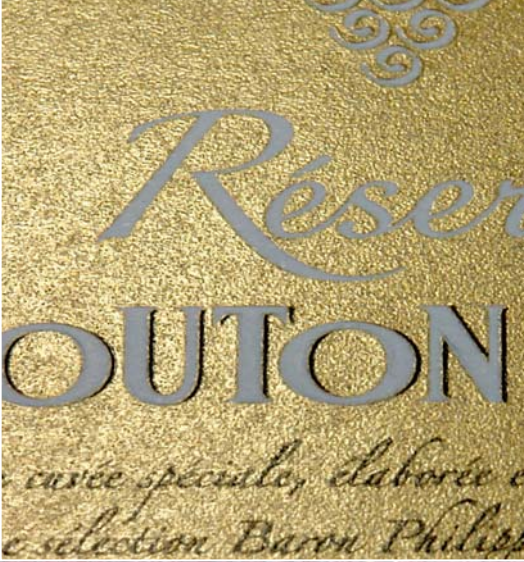
Effects can also be used to convey information. For example, they can enhance safety for pharmaceuticals and food items. Marabu screen printing inks open up huge possibilities, and make them perfect for almost infinite applications.

### *Marabu® Glow GW*

- Solvent-based phosphorescent ink
- Three colour shades with diverse pigment types and glow times
- Protective coating is recommended for outdoor use

### *Marabu® Chrome MC*

- Solvent-based, press-ready silver ink
- For mirror, chrome and metallic effects
- Does not clog the mesh screen; low-odour



### Ultra Star-M UVSM

- Deep-matt opaque black with a velvety yet scratch-resistant surface
- Provides excellent receptivity of metallic hot foil stamping and of thermal transfer foils
- Eye-catching contrast effects through selectively applied gloss overprints

### Braille Varnishes UVLB 1/UVLB 2

- Extremely high ink deposits for rotary and flatbed screen printing
- Very good edge definition
- Very fast curing for high printing speeds up to 50 m/min



# COLOUR MANAGEMENT

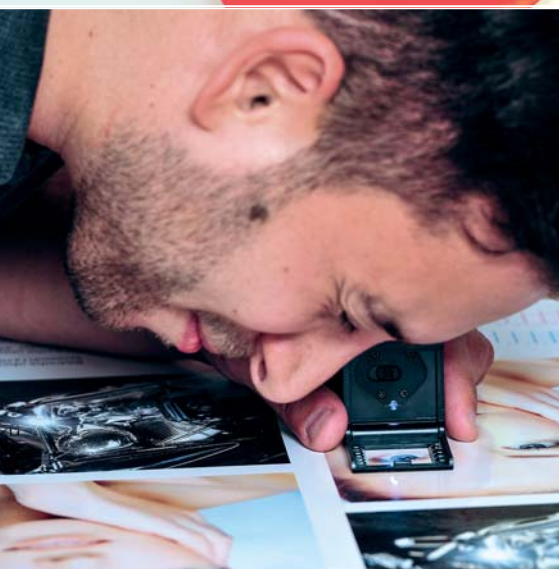
## For perfect reproducibility every time

Graphic and product designers take colour selection very seriously – and have very precise ideas about how the finished results should look.

In order to guarantee the best quality and maximum reproducibility, Marabu offers tried-and-tested tools specially designed to meet these high standards.

Colour matching made easy. Finding precise colour matches has never been so easy – thanks to our high-performance, user-friendly Marabu-ColorManager MCM 2 software. A comprehensive database includes PANTONE®, HKS® and RAL colour matching systems for screen and pad printing. The Marabu-ColorFormulator MCF, on the other hand, works completely independently of colour reference systems: this database is linked to a spectrophotometer, allowing you to create precise reproductions of your colour samples and ensure optimum printing results.

We also offer automatic ink dispensing systems: the Marabu-ColorDispenser. Simple, user-friendly operation and maintenance makes these systems stand out from the crowd, as they allow you to create a perfect colour mix at the touch of a button.





## Proven Pioneers

Research and development is the systematic endeavour to gain new insights. And that is precisely what Marabu does. Our goal is to achieve continuous innovation, creating new and even better solutions to our customers' specific challenges. And we can draw on the expertise gained through more than 65 years' hands-on experience in the development of printing inks.

High quality begins with the careful selection of our suppliers. We only use the purest raw materials. We leave nothing to chance. And we build lasting, reliable partnerships that ensure we receive the goods that are needed as the basis for our exceptional inks.

Our screen printing inks are the result of multiple process stages, supported by developers, engineers and product managers throughout. And this is followed by rigorous testing, to demonstrate the ink's ability to withstand the harsh reality of real-world scenarios.

### Dispersion

Our state-of-the-art production equipment, from leading bead mill manufacturers, delivers extremely finely dispersed pigments. This guarantees perfect results every time - for smooth, trouble-free printing processes.

### Quality control

Marabu inks offer exceptionally consistent quality across all batches and in line with precise specifications. For example, all screen printing inks are passed through a multiple filtration process, and feature exceptionally high sedimentation stability.

### Fine-tuning

Through a combination of multiple analytical methods and devices, we ensure that the physical and chemical properties of our inks are geared to the precise requirements of your applications.

### Light-fastness and weathering

Marabu tests long-term effects using simulated accelerated weathering according to DIN standards, as well as natural weathering under real-life conditions. Our extensive experience guarantees robust products that are ideal for outdoor applications.





## Our Success is Built on Customer Centricity.

**Marabu screen printing inks guarantee outstanding productivity and cost-effectiveness. But Marabu is also about great services because one of our key strengths is our blend of product quality and expert advice. We have distribution partners and subsidiaries in practically all the world's markets. Together, they form a network that spans the globe – to provide reliable service and support, and tailor-made products that can be delivered promptly to wherever they are needed. In other words, we are always close at hand, with the skills, assistance and solutions you need.**

Regular training sessions, plus ongoing information exchange via our enterprise-wide knowledge network, keep our specialists up to speed with the latest products and technologies. Moreover, our service professionals enjoy regular and direct interaction with experts from all our departments. This ensures we can react rapidly and effectively to customer imperatives – providing specialised products and made-to-measure solutions.

As a leading ink manufacturer we place great emphasis on providing basic and specialised information, particularly on new technologies or for specific application areas. Our modern, fully-equipped Training Center offers English seminars and individual training courses on request.



- International service and support network of subsidiaries and carefully selected partners – offering advice and assistance, wherever you are
- Experienced specialists have extensive knowledge of all our products and can advise you on the right solution for your specific needs

- Skilled professionals help you select the best solution in terms of technology and cost-effectiveness
- Interdisciplinary teams comprising both R&D experts and product managers work together to design made-to-measure solutions for our customers



- Our Print Center offers a proofing service on original substrates in line with your needs: helping you find the ideal inks and integrate them into your production processes
- Our Training Center offers courses, seminars, and more – tailored to selected markets or specific customer needs

Our overriding priority is to meet our customers' service needs to their total satisfaction, combining quality with cost-effectiveness. We achieve this goal through proven processes – and through the flexibility, dedication and responsiveness of our employees.



# Marabu Worldwide



Marabu

## Marabu GmbH & Co. KG

71732 Tamm · Germany  
Phone: +49 7141 691 0  
info@marabu.com  
www.marabu-inks.com

## Subsidiaries:

Brazil · São Bernardo  
do Campo  
Marabu do Brasil Ltda.  
Phone: +55 11 3901 8290  
info@marabu.com.br  
www.marabu.com.br

China · Kunshan City  
Marabu China  
Phone: +86 0512 57 82 1188  
chinainfo@marabu.com  
www.marabuchina.cn

Denmark · Vejle  
Marabu Scandinavia AB  
Phone: +45 70 10 00 67  
info@marabu.dk  
www.marabu.dk

Finland · Vantaa  
Marabu Scandinavia AB  
Phone: +358 9 279 8540  
info@marabu.fi  
www.marabu.fi

France · Bondy  
Marabu France S.A.R.L.  
Phone: +33 1 48 02 73 73  
vente@marabu.fr  
www.marabu.fr

United Kingdom · Milton Keynes  
Marabu (UK) Ltd.  
Phone: +44 1908 251180  
info@marabu.co.uk  
www.marabu-inks.co.uk

Italy · Mailand  
Marabu Italia S.a.S.  
Phone.: +39 382 163 72 01  
info-it@marabu.com  
www.marabu-italia.it

Netherlands/Belgium ·  
Almere  
Marabu Nederland b.v.  
Phone: +31 36 5 46 83 44  
info@marabu.nl  
www.marabu.com

Norway · Oslo  
Marabu Scandinavia AB  
Phone: +47 22 73 50 00  
info@marabu.no  
www.marabu.no

Paraguay · Ciudad del Este  
Marabu Paraguay SA  
Phone: +595 61 57 55 40  
idc@marabu.com.py  
www.marabu.com.br

Russia · Moscow  
Marabu Russia  
Phone: +7 495 632 39 94  
m-ritz@marabu.com  
www.marabu-kraski.ru

Sweden · Malmö  
Marabu Scandinavia AB  
Phone: +46 40 672 84 00  
info@marabu.se  
www.marabu.se

Spain · Granollers  
Marabu España S.A.  
Phone: +34 93 8 46 70 51  
marabu@marabu.es  
www.marabu.es

USA · Charleston  
Marabu North America LP  
Phone: +1 843 886 0094  
info-mna@marabu.com  
www.marabu-northamerica.com

Your Marabu Distribution Partner:



Mix  
Produktgruppe aus vorbildlich  
bewirtschafteten Wäldern und anderen  
kontrollierten Herkünften  
www.fsc.org Cert.-Nr. BR-COC-001840  
©1996 Forest Stewardship Council